

\$315,000

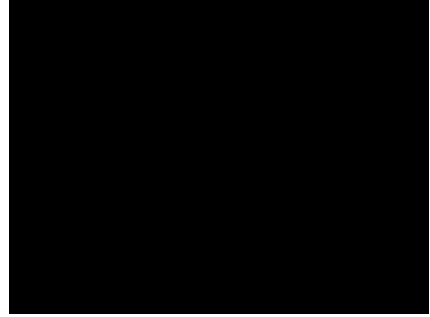
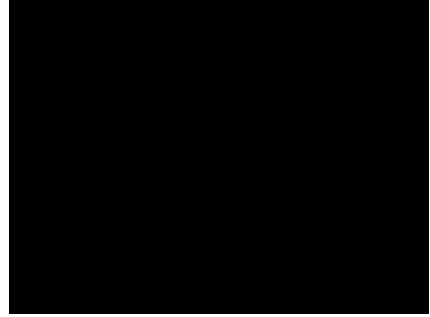
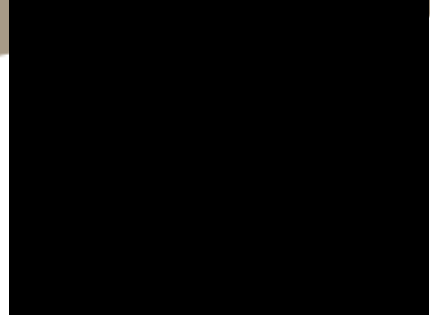


**11650 Pheasant Dr.
Buckhart Estates**

SPACIOUS COUNTRY LIVING AT IT'S BEST! PRIVATE WOODED 4.96 ACRE SETTING OFF CULDESAC; VERY NICE 4/5 BED 4 1/2 BA 4000+ SF RANCH ON FULL FIN W/O BSMT; INTERIOR REDONE 2000; 2 WBFP; PRIV GUEST QUARTERS; 63 FT WOOD DECK; 38X36 BARN W/3+ STALLS, LOFT, TACK RM, & WATER; FENCED PASTURE; 3 WELLS; STAMPED DRIVE; LOTS OF STORAGE; ROCHESTER SCHOOLS.

MLS: 276808

Interactive Floor Plan: www.viewspringfieldhomes.com



Terry Nuding

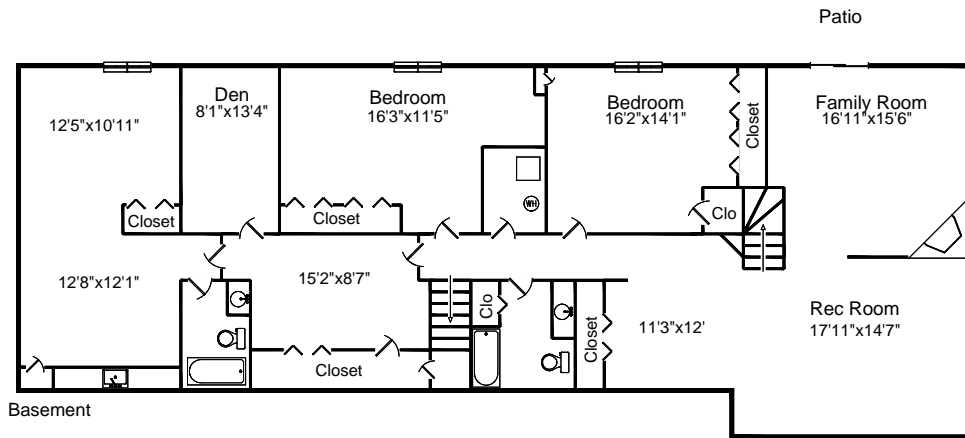
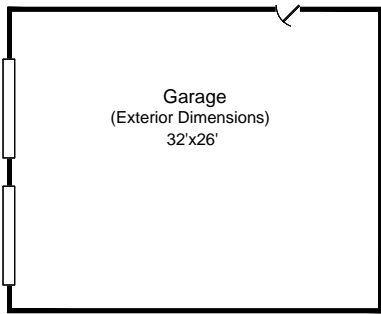
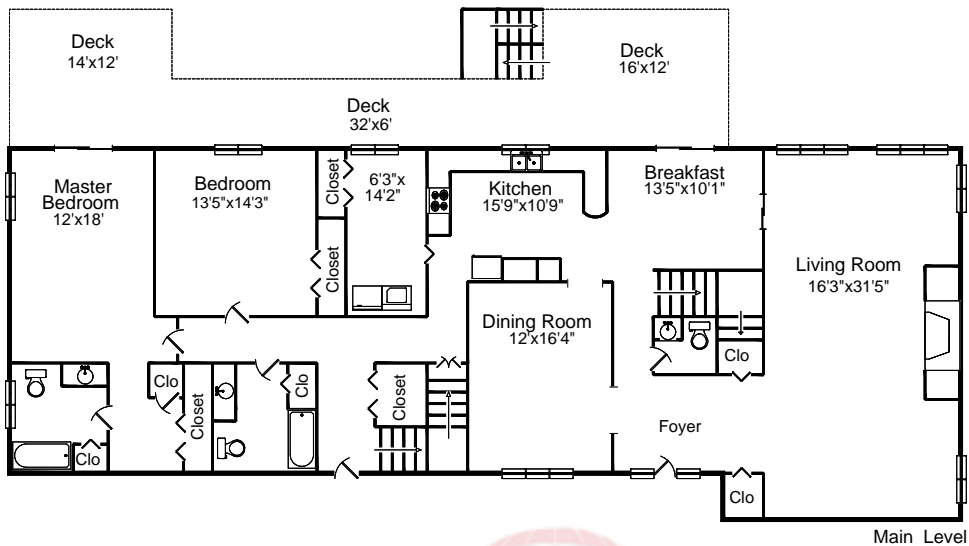
217-787-7215 + Fax: 217-787-8957

Email: homes@terrynuding.com



RE/MAX Professionals

2475 W. Monroe - Springfield, IL 62704
(888) 999-7215 - (217) 787-7215



11650 Pheasant Dr. · Rochester IL 62563



RE/MAX Professionals

Terry Nuding

Office: 217-787-7215

Mobile: 217-652-5479

Email: homes@terrynuding.com

Web: <http://www.terrynuding.com>

Area:	Sq. Ft.
Main Level	2,378
Basement	2,378
Deck	552
Garage	832

